



ForeFlight

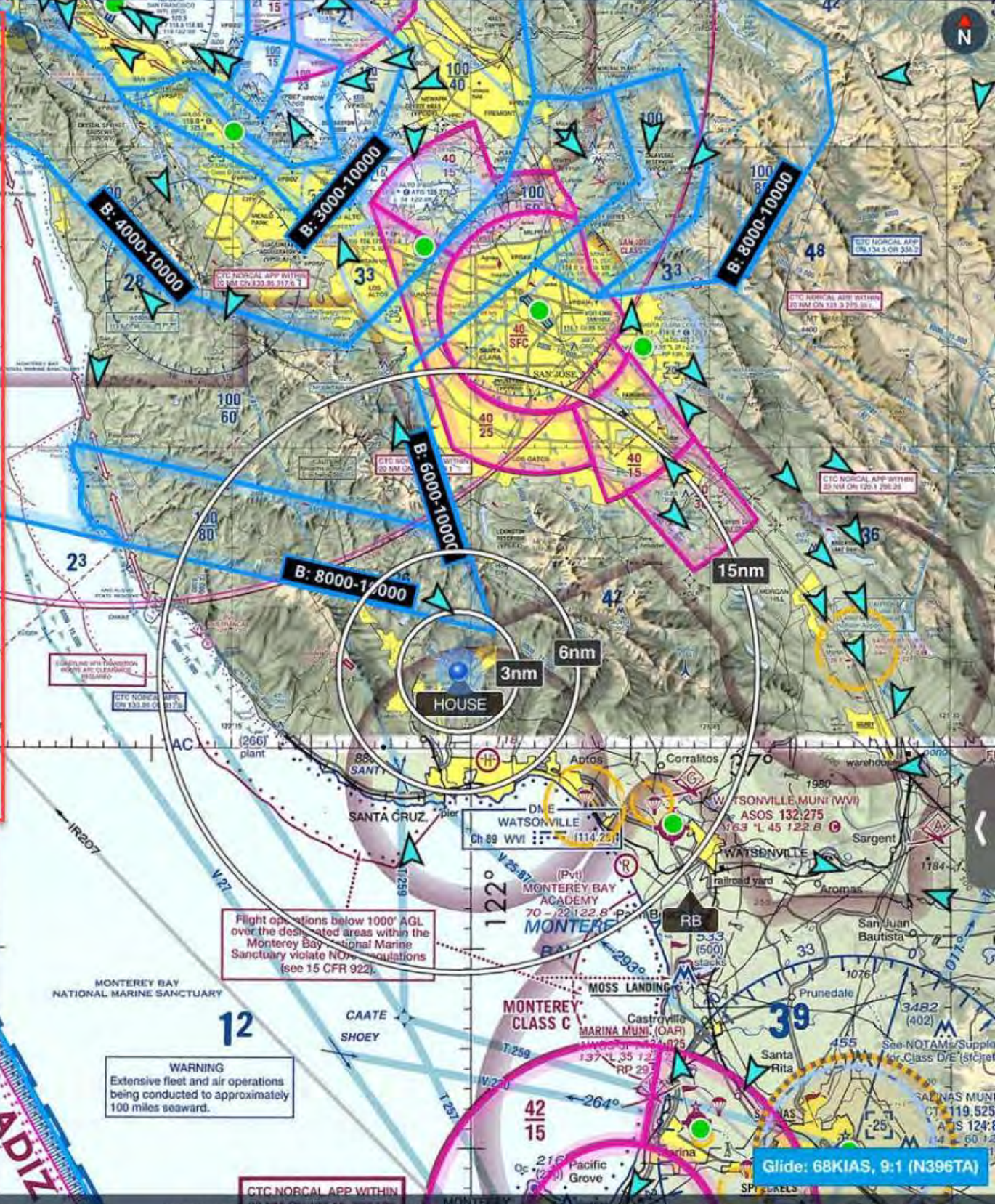
Recommended Settings

Some settings are noted as only applying to CFI's or if you mostly teach

cfi@beraut.com

- Home
- Map
- Waypoints
- Plates
- Documents
- ScratchPads
- Flights
- Logbook
- W&B
- More

High IFR
Low IFR
VFR



Flight operations below 1000' AGL over the designated areas within the Monterey Bay National Marine Sanctuary violate NOAA regulations (see 15 CFR 922).

WARNING
Extensive fleet and air operations being conducted to approximately 100 miles seaward.

Glide: 68KIAS, 9:1 (N396TA)

Descent to Dest Height AGL Groundspeed Track ETE Next ETA Next

- High IFR
- Low IFR
- VFR

USE CAUTION
 High volume traffic
 11,000 to 4000 Morgan Hill
 to Hollister Airport

WATSONVILLE
 DME
 (114.25)

MONTEREY BAY ACADEMY
 (Pvt)
 70 - 22 122.8

WATSONVILLE MUNI
 ASOS 132.275
 163 *L 45 122.8

MOSS LANDING

MONTEREY CLASS C

MARINA MUNI, (OAR)
 Castroville

Glide: Altitude below 200'

Descent to Dest Height AGL Groundspeed 0 kts Track ETE Next ETA Next ETE Dest

- Home
- Map
- Waypoints
- Plates
- ScratchPads
- Flights
- Documents
- Logbook
- W&B
- Imagery
- More

USE CAUTION
High volume traffic
11,000 to 4000 Morgan Hill
to Hollister Airport

4052 (1554)
San Martin
120.1
GILF

Corralitos 37°
1980

WATSONVILLE MUNI (OAR)
ASOS 132.275
163 *L 45 122.8

WATSONVILLE
railroad yard

Palm Beach
533 (500) stacks
33

MOSS LANDING
Castroville
MARINA MUNI, (OAR)

MONTEREY CLASS C
39

Descent to Dest: -----
Height AGL: -----
Groundspeed: 0 kts
Track: -----
ETE Next: -----
ETA Next: -----
ETE Dest: -----

Glide: Altitude below 200'

Aeronautical Settings

Close

Auto-Dismiss After: 5 sec

MAP DISPLAY SETTINGS

Map Theme: Classic >

Terrain: Colored >

Cultural Elements: All >

Place Labels:

Map display settings above apply across all aeronautical modes. The VFR settings below apply only to the VFR mode.

VFR Settings

AIRPORT SETTINGS

Heliports:

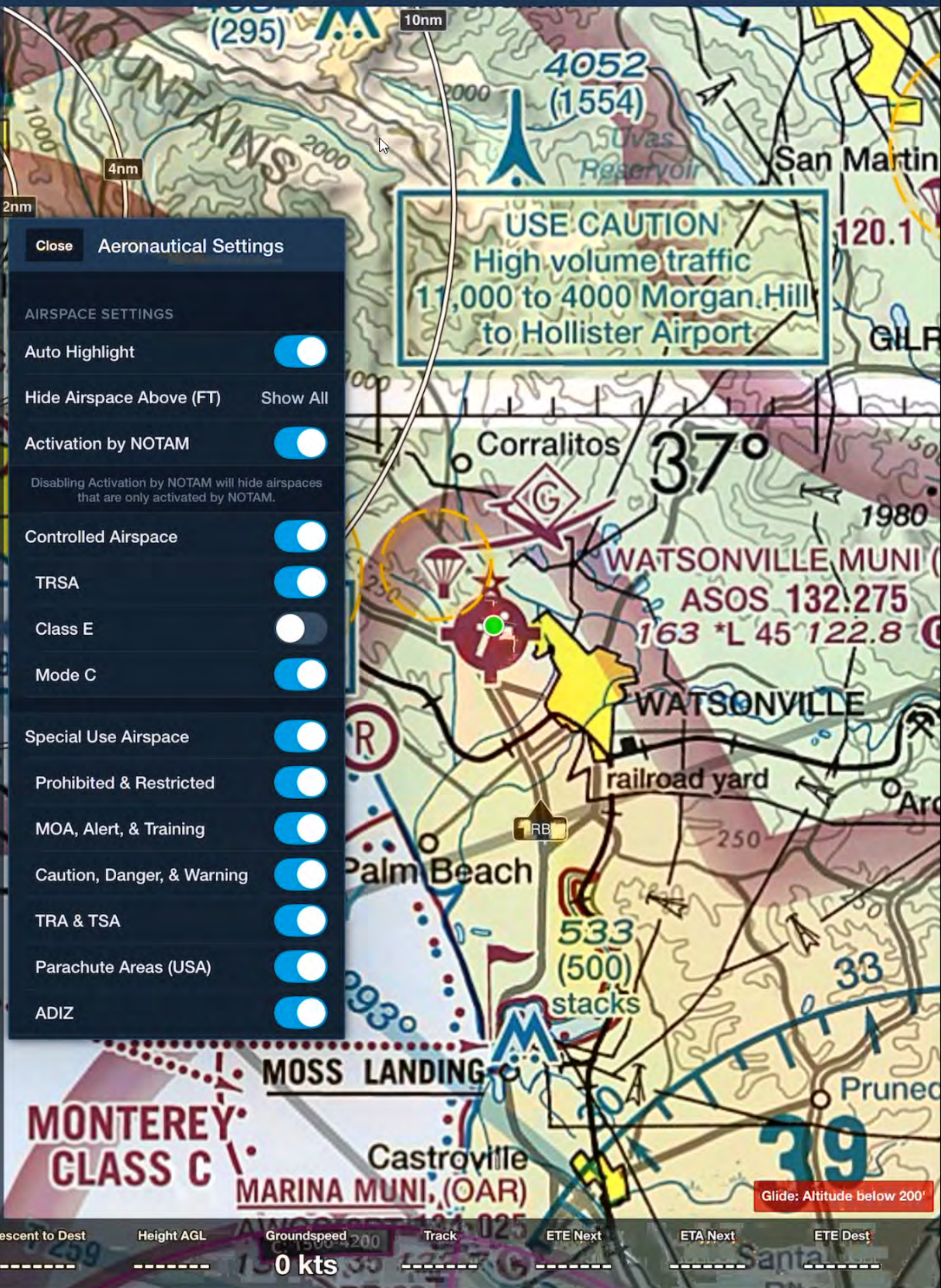
Private Airports:

Seaplane Bases:

Other Fields:

Min. Rwy Length: None

- Home
- Map
- Waypoints
- Plates
- ScratchPads
- Flights
- Documents
- Logbook
- W&B
- Imagery
- More

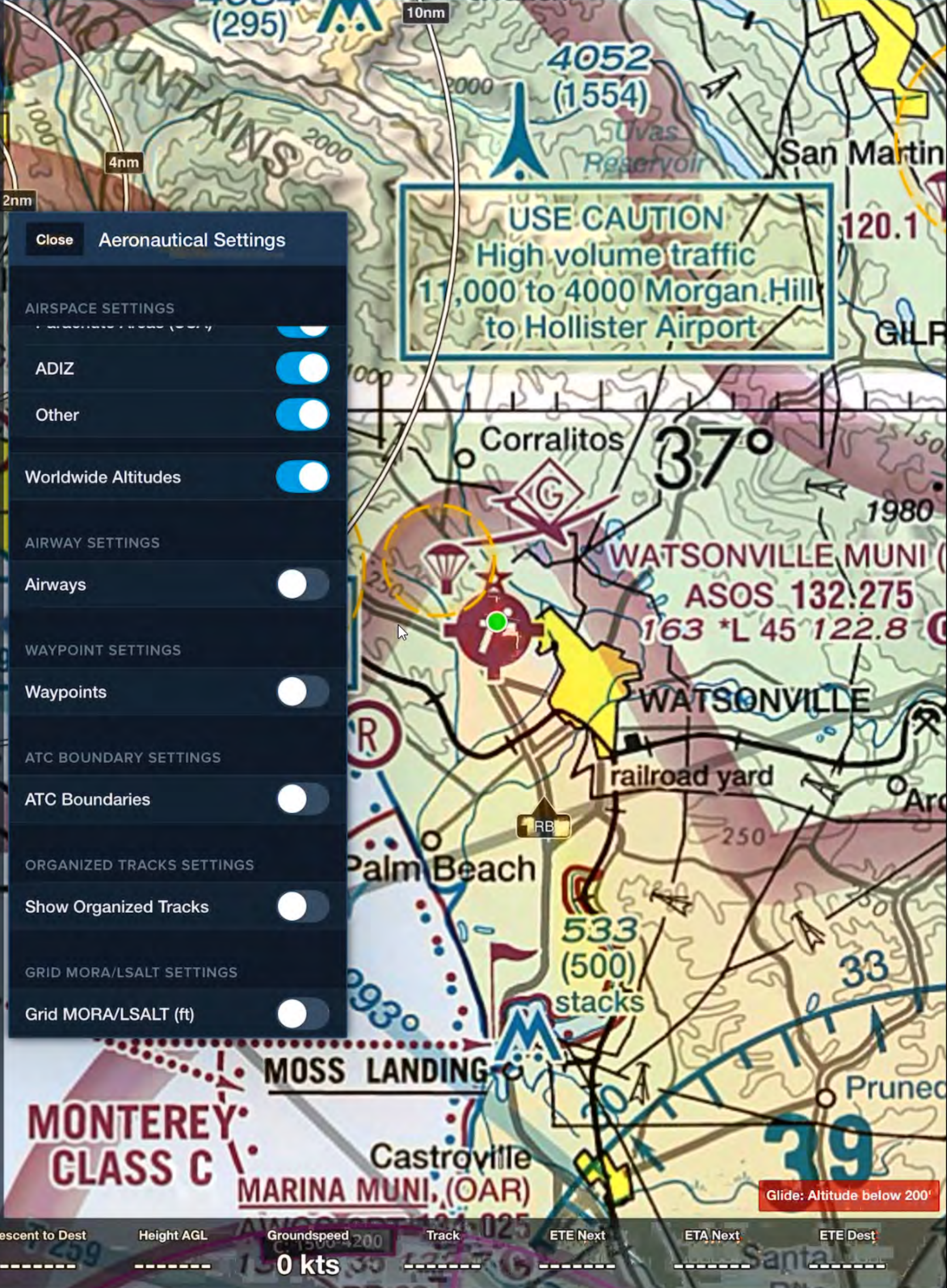


Aeronautical Settings

AIRSPACE SETTINGS

- Auto Highlight
- Hide Airspace Above (FT) Show All
- Activation by NOTAM
Disabling Activation by NOTAM will hide airspaces that are only activated by NOTAM.
- Controlled Airspace
 - TRSA
 - Class E
 - Mode C
- Special Use Airspace
 - Prohibited & Restricted
 - MOA, Alert, & Training
 - Caution, Danger, & Warning
 - TRA & TSA
 - Parachute Areas (USA)
 - ADIZ

- Home
- Map
- Waypoints
- Plates
- ScratchPads
- Flights
- Documents
- Logbook
- W&B
- Imagery
- More



Aeronautical Settings

AIRSPACE SETTINGS

- ADIZ
- Other
- Worldwide Altitudes

AIRWAY SETTINGS

- Airways

WAYPOINT SETTINGS

- Waypoints

ATC BOUNDARY SETTINGS

- ATC Boundaries

ORGANIZED TRACKS SETTINGS

- Show Organized Tracks

GRID MORA/LSALT SETTINGS

- Grid MORA/LSALT (ft)

Descent to Dest: _____ Height AGL: _____ Groundspeed: 0 kts Track: _____ ETE Next: _____ ETA Next: _____ ETE Dest: _____

17:46 PST Internet Traffic

Settings

SCREEN BRIGHTNESS

Invert Chart Colors

FOREFLIGHT MAP

Map Theme Classic >

Terrain Shaded >

Day/Night Overlay

Place Labels

Cultural Elements All >

AUTO-CENTER MODE

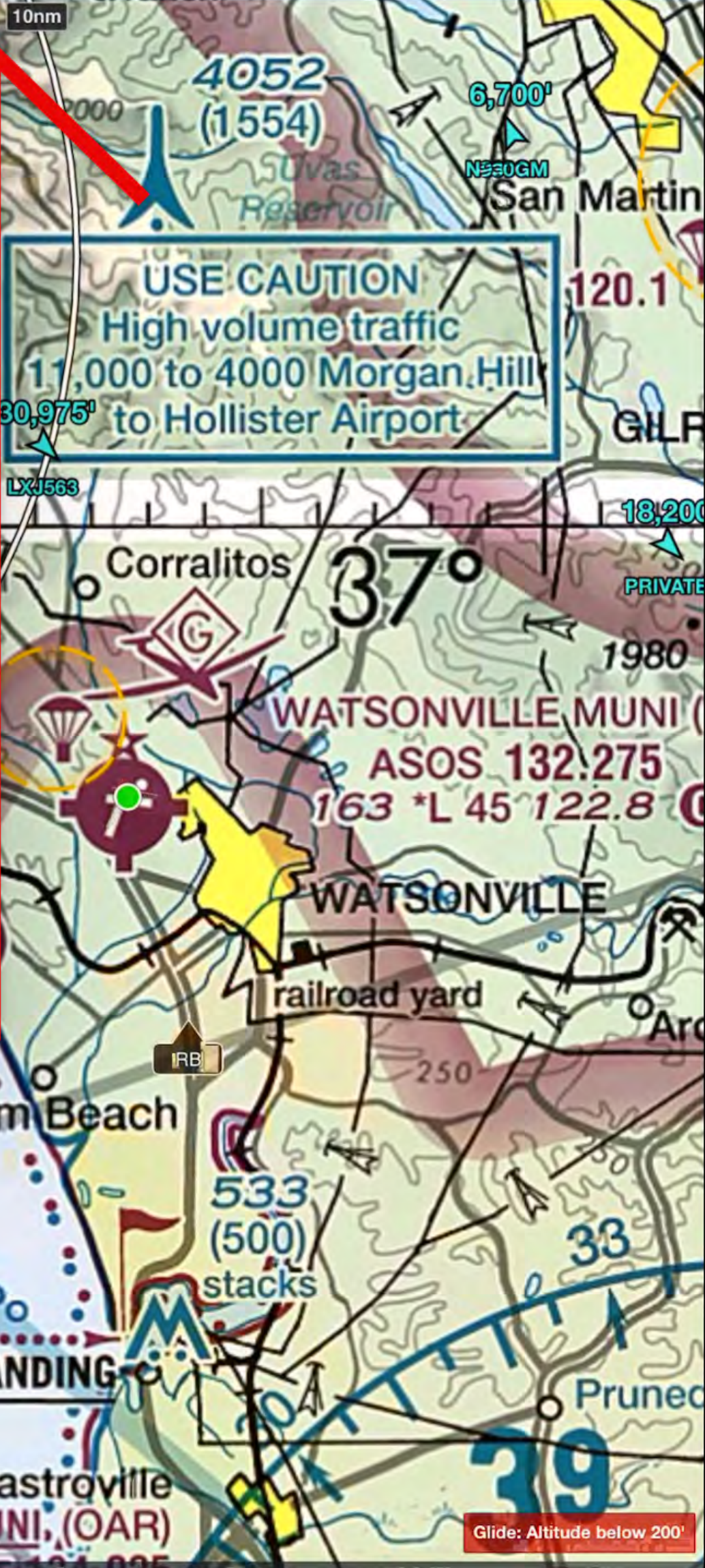
North Up Track Up Centered Track Up Forward

MAP OVERLAYS

Route Labels

Extended Centerlines

Owship Distance Rings



VFR

REC 00:00

+

-

Descent to Dest Height AGL Groundspeed 0 kts Track ETE Next ETA Next ETE Dest

17:40 PST Internet Traffic

Close Settings

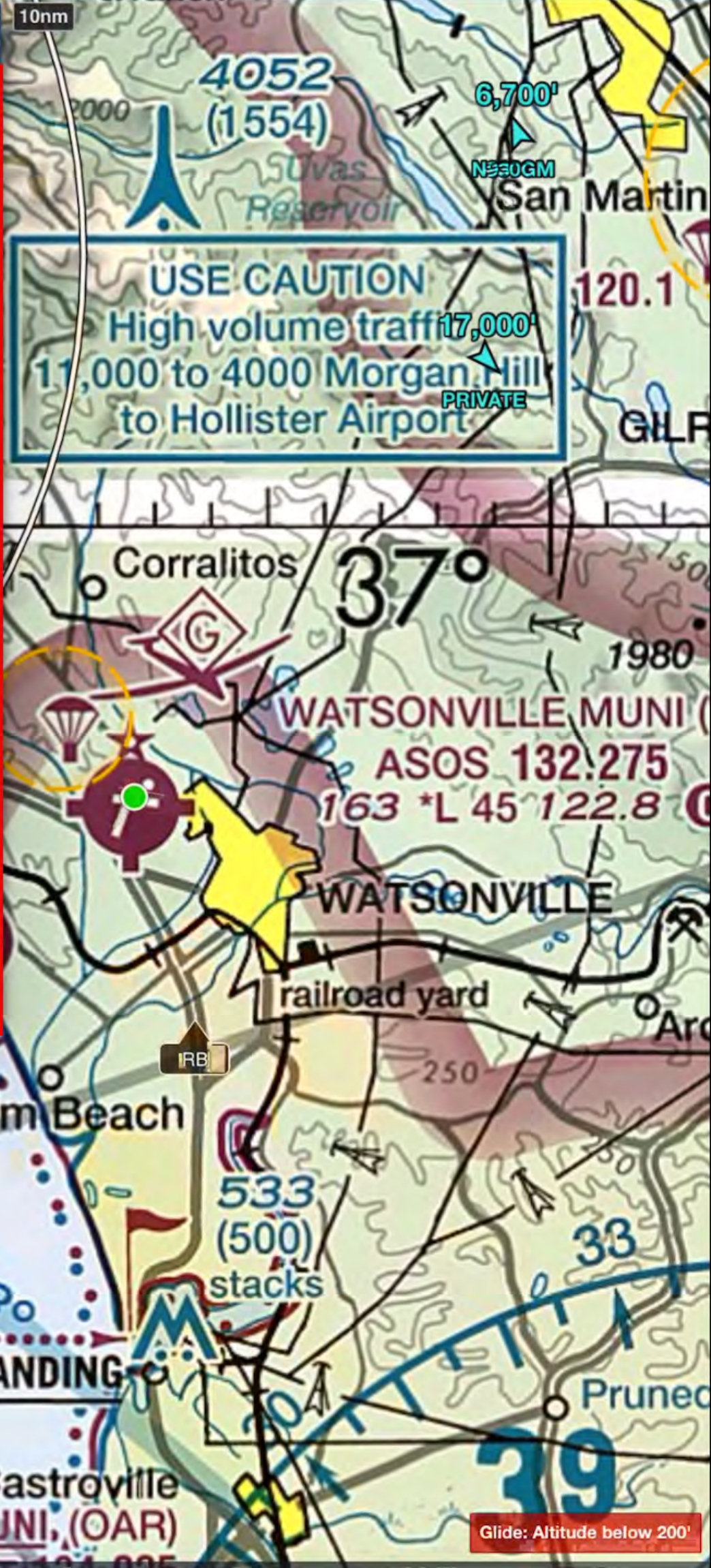
MAP OVERLAYS

- Extended Centerlines
- Owship Distance Rings
- Glide Advisor
- Glide Settings 68kts, 9:1 (N396TA) >
- Track Vector
- Map Legend
- Map Annotations
- Track Log Record Button
- Breadcrumbs >
- Map Touch Action >
- Turbulence Max Age 6 hours >
- Hazards >
- Alerts >

LAYER SELECTOR

- Multiple Selections

TFRS OPACITY



VFR

REC 00:00

+

-

Descent to Dest Height AGL Groundspeed 0 kts Track ETE Next ETA Next ETE Dest



- Settings
- VIEWES Edit Tab Order
- Weight & Balance
- Aircraft
- Custom Content
- Track Logs
- Devices
- Imagery
- Checklist
- Discover
- Passenger
- Account
- Jeppesen
- Support
- About
- Comments

00:00 Tap to Start/Repeat ↑

17:52 PST Internet Traffic

Settings

Close

Filter

Slider

APP THEME

Light Dark **System**

System will transition between Light and Dark based on the system appearance setting.

Light Settings >

Dark Settings >

AIRPORT VIEW

Show Weather First

WEATHER VIEW

Past TAF Translations

ROUTE VIEW

Airway Decoding All Waypoints Shown >

Airway Entry/Exit Any Waypoint >

BREADCRUMBS

Breadcrumbs Settings >

OWNSHIP

Ownship Marker Low Wing >

Ownship Distance Rings

Ownship Distance Rings Style Automatic (Nautical Miles) >

Enable Ownship Always >

Ownship Not For Navigation

MAP VIEW

VFR

REC 00:00

+

-

Glide: Altitude below 200'

Descent to Dest Height AGL Groundspeed 0 kts Track ETE Next ETA Next ETE Dest

17:52 PST Internet-Traffic

Settings

Close

Filter

MAP VIEW

- Auto Center Mode North Up >
- Auto Center Deactivate Automatic >
- Extended Centerlines
- Track Vector
- Track Vector Length 2 Minutes >
- Route Labels
- Hazards >
- Map Touch Action Bring chart to front >
- Cockpit Sharing
- Show Annotations on Map
- Auto-Receive Panel Flight Plans
- Four-color Radar
- Reported Turbulence Max Age 6 hours >
- Internet Radar Coverage
- Show Map Legend
- NOTAMs Settings >

LAYER SELECTOR

- Multiple Selections
Enable to select multiple map layers without closing menu. Tap map to close menu.
- Auto-Zoom to Custom Content

[Icons]

VFR

REC

00:00

[Icons]

Glide: Altitude below 200'

Descent to Dest Height AGL **3,300'** Groundspeed **0 kts** Track ETE Next ETA Next ETE Dest

17:54 PST Internet Traffic

Settings

Close

Filter

ANNOTATIONS

Show Control on Map

Auto Apple Pencil Drawing
Enable so Apple Pencil defaults to annotate mode on Maps, Documents, and Plates.

Annotations Timeout 10 Seconds >

CHECKLIST

Speak Challenge & Response >

TRAFFIC

Hide Distant Traffic (ADS-B / FLARM)

Traffic Breadcrumbs (ADS-B / FLARM)

SEARCH AND RESCUE

SAR Features

SAR Waypoints as Lat/Lon

DOWNLOADS

Background Downloads

Allow Downloads over Cellular

Automatic Downloads
Enable to automatically download available data updates over Wi-Fi when the app is open.

PACK

Enable Auto-Check
Enable so the Pack feature auto-checks for needed data for a planned route of flight.

TRACK LOG

Enable Start/Stop Control

3,300'

Castroville

Glide: Altitude below 200'

Descent to Dest Height AGL Groundspeed Track ETE Next ETA Next ETE Dest

0 kts

17:54 PST
Internet Traffic

Settings

Close

Filter

TRACK LOG

Enable Start/Stop Control

Enable Auto Start/Stop
Enable to automatically record a Track Log from takeoff (>40 knots) to landing.

FLIGHTS

Briefing Format [Graphical \(HTML\) >](#)

TAXI DIAGRAM

Auto Show Taxi

Show Taxi on Map
Enable to auto-show taxi diagram after landing on Maps view when Maps view is active.

PREFERENCES

Alerts >

Units/Time >

Allow Device to Sleep

Automatic Clock Check

Show Heliports

Show Private Airports

Show Aviation Keyboard

Start on Last Screen

Enable Diagnostic Logs

Performance Logging Level

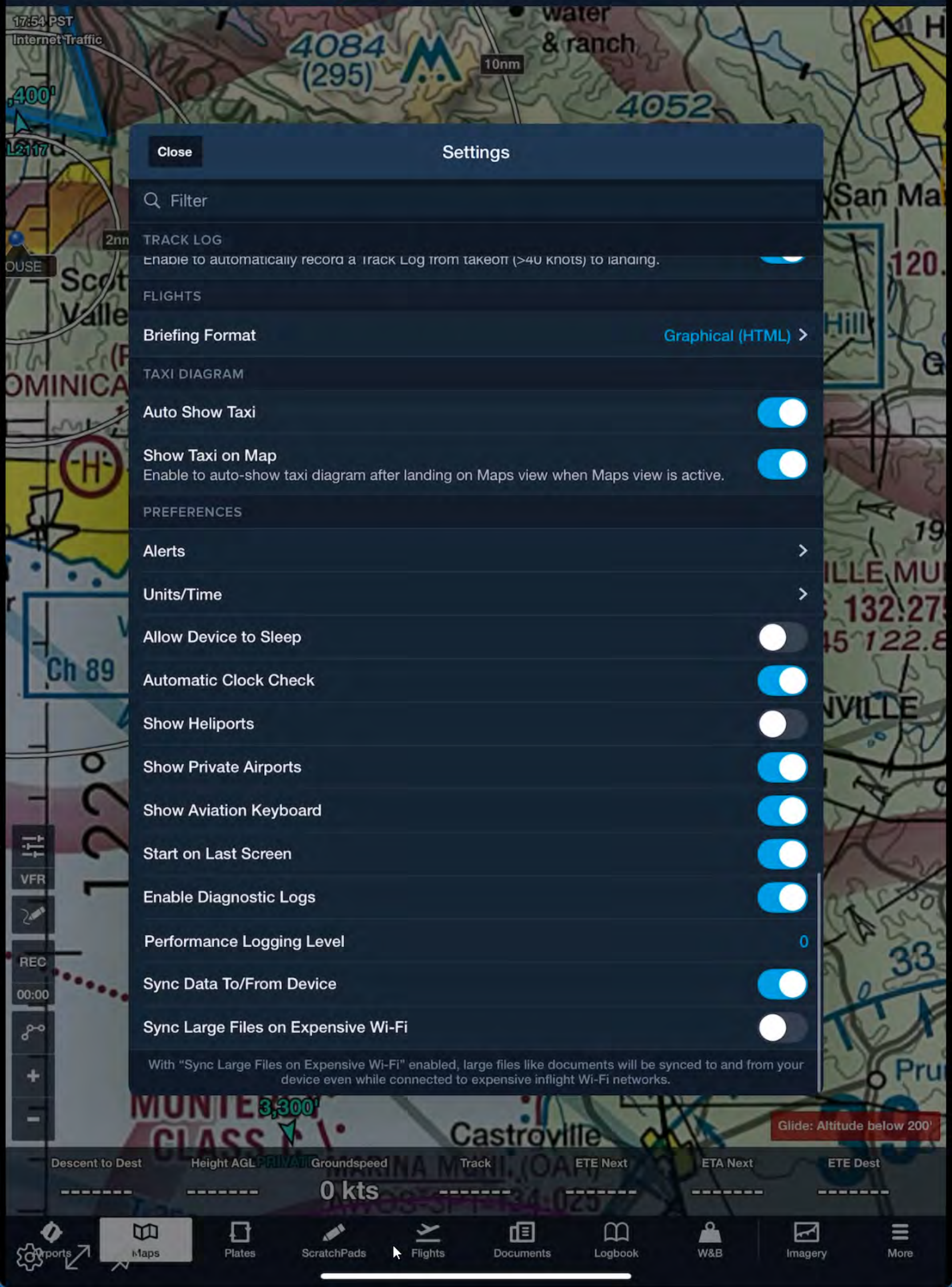
With "Sync Large Files on Expensive Wi-Fi" enabled, large files like documents will be synced to and from your device even while connected to expensive inflight Wi-Fi networks.

3,300'

Castroville

Glide: Altitude below 200'

Descent to Dest Height AGL **PRIVATE** Groundspeed **0 kts** Track ETE Next ETA Next ETE Dest



Settings

Close

Filter

TRACK LOG
Enable to automatically record a Track Log from takeoff (>40 knots) to landing.

FLIGHTS

Briefing Format Graphical (HTML) >

TAXI DIAGRAM

Auto Show Taxi

Show Taxi on Map
Enable to auto-show taxi diagram after landing on Maps view when Maps view is active.

PREFERENCES

Alerts >

Units/Time >

Allow Device to Sleep

Automatic Clock Check

Show Heliports

Show Private Airports

Show Aviation Keyboard

Start on Last Screen

Enable Diagnostic Logs

Performance Logging Level 0

Sync Data To/From Device

Sync Large Files on Expensive Wi-Fi

With "Sync Large Files on Expensive Wi-Fi" enabled, large files like documents will be synced to and from your device even while connected to expensive inflight Wi-Fi networks.

ENTRIES

All	3,140.7
Last 7 Days	7.3
Last 30 Days	24.9
Last 90 Days	87.0
Last 6 Months	168.2
Last 12 Months	378.8

LOGBOOK SETTINGS

Expires Apr 13, 2026	REMAINING
Night (ASEL) Expires Apr 13, 2026	90 Days REMAINING
IFR (Airplane) Expires Mar 31, 2026	77 Days REMAINING
Medical Expires Feb 28, 2027	411 Days REMAINING
Flight Review Expires May 31, 2027	503 Days REMAINING
Flight Instructor (3020048CFI) Expires Jan 31, 2027	383 Days REMAINING

Add Currency

- MENU
- Reports
 - Aircraft
 - People
 - Qualifications
 - Instructor Tools
 - Settings**

Reward balance: 0%

LOGBOOK REGION

- United States (FAA)
- Europe (EASA)

Don't see your region? We recommend using our default, United States (FAA), while we add support for more regions.

GENERAL

- Entry Time Format: Decimal (N.N)
- Draft Entry Creation
- Enable Collapsible Sections:
- Auto-detect Towered Airport in Entry:

This setting uses Track Log data to automatically detect towered airports for takeoffs and landings. Useful for flight training, it simplifies logging for Private and Commercial reports.

TIME

- Total Time Calculation: Hobbs
- Auto-Fill Settings

FIELDS

- Configure Fields

INSTRUCTOR TOOLS

- Enable Instructor Tools:
- Send and record endorsements given to students

REPORTS

- Include Simulators in Total Time:
- Total Time logged in simulators will be included in Total Time on the Experience Report

AUTO-EXPORT

No export is set up. Secure your Logbook by setting up an automatic export of your Logbook every 30 days.

- Export to Email:
- Automatically export to cfi@beraut.com

Logbook Settings

Logbook Tab Might be Here



ENTRIES

All	3,140.7
Last 7 Days	7.3
Last 30 Days	24.9
Last 90 Days	87.0
Last 6 Months	168.2
Last 12 Months	378.8

CURRENCY SUMMARY

General (ASEL) Expires Apr 13, 2026	90 Days REMAINING
Night (ASEL) Expires Apr 13, 2026	90 Days REMAINING
IFR (Airplane) Expires Mar 31, 2026	77 Days REMAINING
Medical Expires Feb 28, 2027	411 Days REMAINING
Flight Review Expires May 31, 2027	503 Days REMAINING
Flight Instructor (3020048CFI) Expires Jan 31, 2027	383 Days REMAINING

Add Currency

MENU

- Reports
- Aircraft
- People
- Qualifications
- Instructor Tools
- Settings

Reward balance: 0%

GENERAL

Route

START & END

Hobbs

Tach

Out/Off/On/In

Duty Time (On Duty - Off Duty)

TIMES

SIC
Second in Command, Co-Pilot, P2, First Officer

Solo

Multi-Pilot

PICUS
Pilot-in-command under supervision, ICUS, P1u/s, Command Practice

Examiner

CROSS COUNTRY

Distance

TAKEOFFS & LANDINGS

All Landings

Only applies to the past entries with All Landing field available

INSTRUMENT

Actual Instrument
Instrument Meteorological Conditions

Simulated Instrument
Simulated Instrument Conditions

Holds

IFR
Operated under Instrument Flight Rules

TRAINING

Dual Given
Instructor, FI

Dual Received
Dual

Simulated Flight

Ground Training

Logbook



Settings

Configure Fields

ENTRIES

All	3,140.7
Last 7 Days	7.3
Last 30 Days	24.9
Last 90 Days	87.0
Last 6 Months	168.2
Last 12 Months	378.8

CURRENCY SUMMARY

General (ASEL) Expires Apr 13, 2026	90 Days REMAINING
Night (ASEL) Expires Apr 13, 2026	90 Days REMAINING
IFR (Airplane) Expires Mar 31, 2026	77 Days REMAINING
Medical Expires Feb 28, 2027	411 Days REMAINING
Flight Review Expires May 31, 2027	503 Days REMAINING
Flight Instructor (3020048CFI) Expires Jan 31, 2027	383 Days REMAINING

Add Currency

MENU

- Reports
- Aircraft
- People
- Qualifications
- Instructor Tools

Custom Fields not required



Settings

TIMES

- Multi-Pilot
- PICUS
Pilot-in-command under supervision, ICUS, P1u/s, Command Practice

EXAMINER

CROSS COUNTRY

Distance

TAKEOFFS & LANDINGS

All Landings

Only applies to the past entries with All Landing field available

INSTRUMENT

Actual Instrument
Instrument Meteorological Conditions

Simulated Instrument
Simulated Instrument Conditions

Holds

IFR
Operated under Instrument Flight Rules

TRAINING

Dual Given
Instructor, FI

Dual Received
Dual

Simulated Flight

Ground Training

Ground Training Given

NIGHT VISION GOGGLES

Night Vision Goggles

CUSTOM FIELDS

61.129a(c)3

Passengers

Add Custom Field

Reward balance: 0%

Totals for Hours, Numeric, Counter, and Toggle (on) Custom Fields are displayed in your experience report.

ENTRIES

All	3,140.7
Last 7 Days	7.3
Last 30 Days	24.9
Last 90 Days	87.0
Last 6 Months	168.2
Last 12 Months	378.8

CURRENCY SUMMARY

General (ASEL) Expires Apr 13, 2026	90 Days REMAINING
Night (ASEL) Expires Apr 13, 2026	90 Days REMAINING
IFR (Airplane) Expires Mar 31, 2026	77 Days REMAINING
Medical Expires Feb 28, 2027	411 Days REMAINING
Flight Review Expires May 31, 2027	503 Days REMAINING
Flight Instructor (3020048CFI) Expires Jan 31, 2027	383 Days REMAINING

Add Currency

MENU

- Reports
- Aircraft
- People
- Qualifications
- Instructor Tools
- Settings**

Reward balance: 0%

LOGBOOK REGION

- United States (FAA)
- Europe (EASA)

Don't see your region? We recommend using our default, United States (FAA), while we add support for more regions.

GENERAL

- Entry Time Format Decimal (N.N) >
- Draft Entry Creation >
- Enable Collapsible Sections
- Auto-detect Towered Airport in Entry

This setting uses Track Log data to automatically detect towered airports for takeoffs and landings. Useful for flight training, it simplifies logging for Private and Commercial reports.

TIME

- Total Time Calculation Hobbs >
- Auto-Fill Settings < **AUTOFILL SETTINGS**

FIELDS

- Configure Fields >

INSTRUCTOR TOOLS

- Enable Instructor Tools
- Send and record endorsements given to students

REPORTS

- Include Simulators in Total Time
- Total Time logged in simulators will be included in Total Time on the Experience Report

AUTO-EXPORT

No export is set up. Secure your Logbook by setting up an automatic export of your Logbook every 30 days.

- Export to Email
- Automatically export to cfi@beraut.com

Logbook Settings

Logbook Tab Might be Here



ENTRIES

All	3,140.7
Last 7 Days	7.3
Last 30 Days	24.9
Last 90 Days	87.0
Last 6 Months	168.2
Last 12 Months	378.8

CURRENCY SUMMARY

General (ASEL) Expires Apr 13, 2026	90 Days REMAINING
Night (ASEL) Expires Apr 13, 2026	90 Days REMAINING
IFR (Airplane) Expires Mar 31, 2026	77 Days REMAINING
Medical Expires Feb 28, 2027	411 Days REMAINING
Flight Review Expires May 31, 2027	503 Days REMAINING
Flight Instructor (3020048CFI) Expires Jan 31, 2027	383 Days REMAINING

Add Currency

MENU

- Reports
- Aircraft
- People
- Qualifications
- Instructor Tools

Settings

Reward balance: 0%

STANDARD FIELDS

- PIC
- Solo
- Dual Given
Instructor, FI
- Dual Received
Dual
- Cross Country



Select only if mostly teaching